



SYNC LIFT ENGINEERING

REPLACE LIMITATIONS
WITH INNOVATION

DIVERSE ENGINEERED SOLUTIONS FROM WORKSHOP TO SITE

FABRICATION AND OVERHAUL CAPABILITY STATEMENT



SYNC LIFT
ENGINEERING



**REPLACE LIMITATIONS
WITH INNOVATION**

Sync Lift Engineering is a trusted partner in Projects & Shutdowns, Fabrication & Overhaul, Field Services, Specialised Hydraulic Jacking, Breakdown Support & Sustaining Capital Works for the Mining, Ports, Power, Resources & Infrastructure Sectors.

With extensive experience in major shutdowns and project delivery, we are recognised for safe, efficient and high-quality execution in complex operating environments.

Our expertise spans both mobile and fixed plant, including draglines, rope shovels, hydraulic excavators, overburden drills, cement mills, coal handling preparation plants, and stockyard terminals. Through disciplined systems, practical knowledge, and a proactive approach, we achieve consistent results that deliver critical outcomes.

Directors Brian Lynch, Marc Richards, and Brad Klease lead a team with decades of hands-on industry experience. Working closely with clients, we minimise operational disruption while maximising asset availability, reliability, and performance.

Our vision is to deliver sustainable, industry-leading services by empowering people to replace limitations with innovation.

Our mission is to build, maintain, and improve assets through safe, efficient, and cost-effective delivery. Our values – Health & Safety, Courage & Integrity, Loyalty & Respect, Teamwork & Achievement – shape our culture and guide our work every day.

Renowned for our technical capability, responsive project teams, and consistent results, our Projects & Shutdowns Division partners with clients throughout Queensland and New South Wales to deliver practical, scalable solutions that perform.



Brad Klease Brian Lynch Marc Richards





OUR VISION

— MISSION & VALUES

Our **Vision** is to provide sustainable, industry leading engineering and maintenance services & solutions. We will achieve this through our people who 'replace limitations with innovation' creating value for our stakeholders worldwide.

Our **Mission** is to build, maintain and improve our client's assets through the reliable delivery of safe, efficient, and cost-effective outcomes.

HEALTH & SAFETY

We are committed to providing safe systems of work to deliver a risk-averse workplace with regard to the safety, health and wellbeing of our employees, clients, community, and the environments in which we operate.

COURAGE & INTEGRITY

We have the courage to challenge the status quo and are open, honest and transparent taking responsibility for our work and our actions.

LOYALTY & RESPECT

We develop long term relationships by earning respect, building trust, and gaining the support of our clients, partners and each other. We are dependable, take ownership and accountability for our own and our client's assets.

TEAMWORK

We work collaboratively as a team in a cooperative, inclusive and supportive environment to achieve success for our clients and employees.

ACHIEVEMENT

We are committed to achieving success for our clients, partners and each other. We continue to listen and learn to ensure continuous improvement in our operations.



SYNC LIFT
ENGINEERING

OUR WORKSHOP

GLADSTONE

Our strategically located Gladstone facility spans 18,000 m² of land, providing convenient access to major industrial processing plants and ports in this area.



KEY FEATURES:

- 1,500 m² heavy engineering workshop
- 3,500 m² modular assembly area
- 2,000 m² site readiness facility
- 5,000 m² laydown area
- Dedicated hydrotesting area
- Office spaces

CRANAGE CAPACITY:

- 60-tonne overhead crane
- 10-tonne overhead crane

THE FACILITY IS DESIGNED TO SUPPORT:

- Heavy fabrication and overhaul (mining equipment, dragline buckets, shovel dippers, excavator buckets, dozer blades, dump truck trays, rotatable spares)
- General fabrication and maintenance works (platework, pipework, modular and portal structures)
- Ancillary works (platforms, handrail, grating)
- Minor machining, milling
- Line boring

EQUIPMENT:

Our equipment is selected to deliver safe, efficient, and large-scale project support:

- 5-tonne rough terrain forklift
- Skid-mounted welding units and mobile welding trailers
- Lineboring containers
- Hydraulic jacks and control systems
- 6-tonne delivery truck
- Fully compliant mine site vehicles:
 - 4x4 and 4x2 trucks
 - 12-seater buses
 - Large fleet of 4x4 one-tonne utilities
- Specialist stands, packing, and support gear
- Over 25 bespoke containers with asset-tracked tooling and equipment for minor and major projects, downtime response, and full-scale shutdowns (150+ personnel)



PROPERTY OF
GENERAL MOTORS
CANTON OH 44705
UNIT NO. 1432143-0001
DATE: 04/19/2000

PROJECT

CASE STUDIES



SYNC LIFT
ENGINEERING

PROJECT

CASE STUDIES

TC18 Dragline Bucket

HSE – No LTI's, reportable injuries or incidents.

SCOPE OF WORK

- ✓ Carry out extensive structural and wear component repairs to restore operational integrity and extend service life
- ✓ Nose and lip repairs, including gauging, removal and replacement of wear strips, Domite buttons, and installation of new lip shrouds
- ✓ Wing shroud stations gauged, with wear packages removed and replaced as necessary
- ✓ Drag hitch repairs, involving removal/replacement of bushes and build-up of hitch faces
- ✓ Removal and replacement of Internal floor liner package with associated crack repairs
- ✓ Replacement of corner castings and hockey sticks
- ✓ Removal and replacement of rear structural side wall plates, liners, and crack repairs in affected areas
- ✓ Replacement of heel beam wear bars and associated floor plate sections
- ✓ Removal and replacement of trunnion bracket bushes
- ✓ Repairs to the arch section, including replacement of the anchor bracket, top arch cover plate, and dressing of all bruising and deformed areas
- ✓ All works were performed in accordance with project specifications, OEM requirements, and relevant welding and inspection standards



PROJECT

CASE STUDIES

Furnace Remediation Project

HSE – No LTI's, reportable injuries or incidents.

SCOPE OF WORK

- ✔ Dismantling and removal of the top section of the furnace from the pit using a diamond wire rope cutting system and a 200 tonne lift and lock gantry system
- ✔ Complete disconnection and removal of all ancillary components surrounding the furnace, including but not limited to gas lines, insulation, sensors, control boxes, and ductwork
- ✔ Removal of frozen cast aluminium and the existing furnace base from the furnace base-ment by cutting into manageable sections using diamond wire rope cutting technology
- ✔ Fabrication of a new furnace base as per design specifications.
- ✔ Installation of the refurbished furnace shell ensuring proper levelling, anchoring and alignment
- ✔ Installation of all ancillary equipment, instrumentation, and control systems
- ✔ Fabrication and installation of new gas piping to meet code and operational requirements



PROJECT

CASE STUDIES

Draglink Conveyor & Dip Seal Fabrication & Installation

HSE – No LTI's, reportable injuries or incidents.



SCOPE OF WORK

- ✓ In house fabrication of 3CR12 Dipseal and carbon steel draglink conveyor – all fabricated to tight tolerances over 24+ metre lengths
- ✓ On site removal and disposal of Draglink conveyor and Dipseal using bespoke inhouse designed jacking and skating solutions to remove existing and install the new
- ✓ Installation on site of both units 1 and 2
- ✓ Removal and installation methodology designed by Sync Lift Engineering reduced the replacement duration by 5 days per unit

Pump House Piping

HSE – No LTI's, reportable injuries or incidents.

PROJECT

CASE STUDIES

SCOPE OF WORK

- ✓ 3D laser scan of the pump house to facilitate accurate pipework design
- ✓ Develop detailed methodology to ensure safe and efficient on-site installation
- ✓ Fabrication of piping
- ✓ Installation
- ✓ Commissioning





SYNC LIFT
ENGINEERING

PROJECT

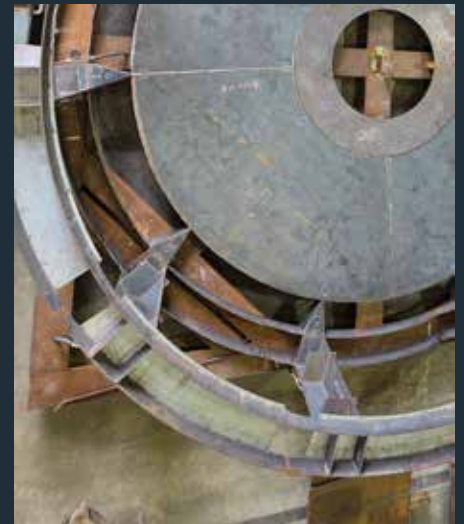
CASE STUDIES

Bucketwheel Fabrication

HSE – No LTI's, reportable injuries or incidents.

SCOPE OF WORK

- ✓ Fabrication of the following components:
Bucket Wheel, Radial Chute, Reclaimer Buckets
- ✓ Fabrication consisting of carbon steel & 3CR12 stainless steel materials
- ✓ Development and implementation of distortion mitigation plan to maintain tolerances including surveying by third party for the fabrication of the bucket wheel
- ✓ Line boring and machining
- ✓ Surface protection to client specification
- ✓ All welding conforming to the requirements of AS/NZS 1554.1
- ✓ Onsite Removal and Installation
- ✓ Onsite Removal and Installation Methodology designed by Sync Lift Engineering



PROJECT

CASE STUDIES

SCL Shed Wall Replacement

HSE – No LTI's, reportable injuries or incidents.



SCOPE OF WORK

- ✓ Removal of existing walls that were severely damaged and no longer structurally sound
- ✓ Installation of new structural walls and bracing, comprising approximately 90 tonnes of steel plate and pre-formed steel channels
- ✓ Design and fabrication of specialized jigs to ensure the safe and accurate installation of steel channels
- ✓ Installation of steel channels to facilitate the welding of steel sheets into their final positions

Dolphin Gangway Replacement

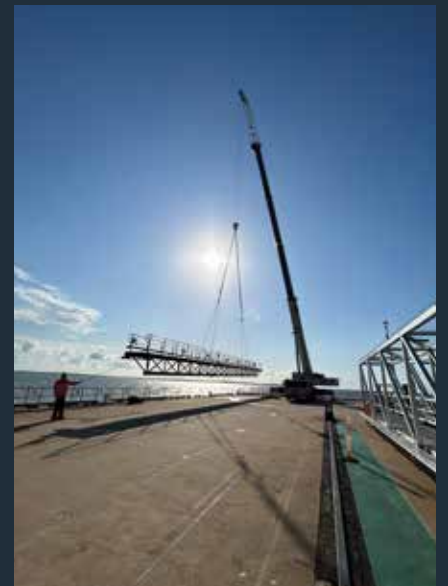
HSE – No LTI's, reportable injuries or incidents.

SCOPE OF WORK

- ✓ Scope works and provide detailed methodology of the safe removal and installation of the dolphin gangway
- ✓ Removal and Installation of gangway sections using a 350t crane and the barge with a 60t crane used to remove the furthest section
- ✓ Aluminium Tig welding of handrails support stiffeners
- ✓ Installation of scaffolding access to access centre pile for remediation
- ✓ Removal and installation of centre pile cap
- ✓ Installation of new dolphin gangway
- ✓ Engagement and co-ordination of Subcontractors
- ✓ Co-ordination of barge operations

PROJECT

CASE STUDIES







WLI 2600KG

PROJECT

CASE STUDIES

Mud Mixer Shed

HSE – No LTI's, reportable injuries or incidents.

SCOPE OF WORK

- ✓ Fabricate all structural components
- ✓ Surface protection to client specification
- ✓ Removal of existing structure
- ✓ Engage and manage subcontractor to complete civil works
- ✓ Installation of new structure
- ✓ Installation of cladding, guttering & down pipes



ANE Manufacturing Plant Upgrade

HSE – No LTI's, reportable injuries or incidents.

SCOPE OF WORK

- ✓ Site installation of pre-fabricated pipe spools
- ✓ Cutting, beveling, and welding of 304SS piping sections as per isometric drawings and project specifications
- ✓ Field welding & Installation of Pipe supports and hangers
- ✓ Installation of Swagelok steam tracing lines along designated pipe runs ensuring adequate contact and thermal coverage for process requirements
- ✓ Controlled assembly of all flanged connections, including bolt torquing to specified values
- ✓ Tagging, tracking, and documentation of all flanged joints using Flange Management protocols
- ✓ Off-site & On site hydro testing of fabricated pipe spools to client specifications

PROJECT

CASE STUDIES



PROJECT

CASE STUDIES

D3 Dipper Refurbishment

HSE – No LTI's, reportable injuries or incidents.

SCOPE OF WORK

- ✔ Carry out repairs as per scope of work provided
- ✔ Guaging of adapter stations, lip and wing shrouds
- ✔ Crack Repairs to lip, dipper body, equaliser and door inboard/outboard
- ✔ Replacement of worn components, floor liner plates and wear plates
- ✔ Replacement of Dutchman
- ✔ Lineboring and installation of replacement bushes
- ✔ Removal and overhaul of equaliser
- ✔ Fitment of new wear package on door latch housing and full door
- ✔ Strip & fit new door latching components
- ✔ Fitment of new wear blocks inside latch bar tunnel
- ✔ Full overhaul of door inboard and outboard inclusive of all ancillaries



TOOLING & EQUIPMENT CAPABILITY



STRUCTURAL

Welding & Power
Containers equipped with 12 x Lincon DC600 welders & associated connections can facilitate welding & power requirements for the largest shutdowns.



MECHANICAL

Mechanical tooling containers set out using the 5s principle, ensures all tooling required to execute the most complex shutdowns is at the fingertips of our skilled tradesman.



RIGGING

Rigging containers designed to maximise storage capacity and ease of access. This ensures all of the vital rigging, lifting & height safety equipment required is within arms reach

Sync Lift Engineering has made significant strategic investments to ensure we maintain one of the most reliable, advanced, and fully compliant asset inventories in the industry.

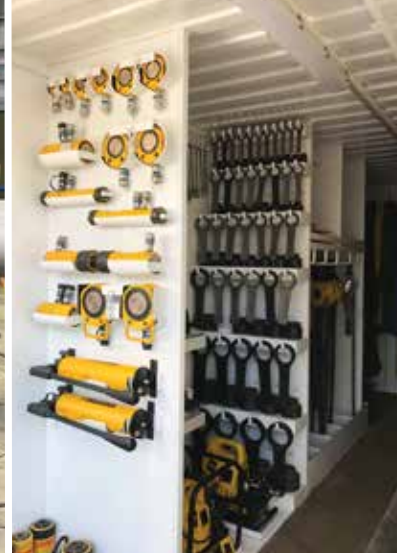
Our tooling fleet includes more than 25 custom engineered containers, each equipped with specialised, asset-tracked tools to support both routine and critical-path maintenance activities. These are configured to service rapid response works through to full-scale shutdowns supporting crews of 150+ personnel. All tooling is organised and maintained under strict 5S methodology, maximising tool time and reducing onsite inefficiencies.

We operate a **fleet of mobile, skid & trailer mounted welding plants**, enabling us to work self-sufficiently in remote and high-risk environments without reliance on client infrastructure.

Our **heavy lifting capabilities** include a wide range of hydraulic jacks and control systems, spanning from 5T through to 1000T, complemented by fully engineered, specialised jacking solutions tailored for dragline, shovel, balance machine and fixed plant asset requirements.

We also maintain an extensive inventory of purpose-built stands, packing systems and support structures, specifically designed for large-scale surface mining equipment, ensuring safe, compliant, and efficient execution.

Behind this capability is our **dedicated team of Asset, Procurement, and Mobilisation specialists**, who guarantee 100% compliance and readiness across all tooling and equipment.



EQUIPMENT & TOOLING

GENERAL TOOLING & EQUIPMENT CONTAINERS

20 FT MECHANICAL # 1 CONTAINER

20 FT MECHANICAL # 2 CONTAINER

20 FT STRUCTURAL # 1 CONTAINER

20 FT STRUCTURAL # 2 CONTAINER

20 FT RIGGING # 1 CONTAINER

20 FT RIGGING # 2 CONTAINER

20 FT ELECTRICAL # 1 CONTAINER

20 FT PPE & CONSUMABLES # 1 CONTAINER

20 FT PPE & CONSUMABLES # 2 CONTAINER

20 FT PPE & CONSUMABLES # 3 CONTAINER (BULK STORAGE)

20 FT PPE & CONSUMABLES # 4 CONTAINER (BULK STORAGE)

20 FT ISOLATION CONTAINER

20 FT POTABLE WATER CONTAINER

10 FT DANGEROUS GOODS CONTAINER

20 FT TOOLS STORAGE CONTAINER

20 FT CLIMAX 5" LINEBORING CONTAINER

20 FT ENERPAC SYNCHRONOUS JACKING SYSTEM # 1 CONTAINER (C/W 7 X 500 T D/A JACKS)

20 FT DURAPAC SYNCHRONOUS JACKING SYSTEM # 2 CONTAINER (C/W 7 X 500 T D/A JACKS)

20 FT WELDING & POWER CONTAINER (C/W 12 X DC 600A ELECTRIC WELDERS)

SPECIALISED EQUIPMENT

BEARING INDUCTION HEATER

TORQUE MULTIPLIER & PUMP - 1.5" DR

TORQUE MULTIPLIER & PUMP - 1" DR

TORQUE MULTIPLIER & PUMP - 2.5" DR

TORQUE MULTIPLIER & PUMP - 3/4" DR

46MM CASSETTE STYLE TORQUE MULTIPLIER & PUMP

RAD TORQUE GUN - 3/4" DR

ALKITRONIC BATTERY POWERED TORQUE GUN - 1" DR

DIAPHRAGM PUMP & 1000 L POD

HUSQVARNA DRILL STAND & DRILL (LONG STROKE) - 2 OF

HOLEMAKER TAP50 MAGNETIC BASE DRILL - 2 OF

HOLEMAKER PRO110 MAGNETIC BASE DRILL - 6 OF

RIGGING / PARTS LIFTING BOXES - 1000KG WLL - 10 OF

6 PORT COMPRESSED AIR MANIFOLDS - 4 OF

80 T WLL LOAD SKATES - 4 OF

10 T WLL LOAD SKATES - 8 OF

HEAVY RIGGING CHEST (CHAINS TO 32MM & BOW SHACKLES TO 120 T WLL)

HYDRANUT KIT

SITE INFRASTRUCTURE

30M X 30M TUB SHELTER

84 M TUB SKATEWAY SYSTEM

POTABLE WATER TANK - 5000 L - 2 OF

POTABLE WATER WASH BASIN C/W FILTRATION SYSTEM - 2 OF

HARDWOOD TIMBER SLEEPER BOG MAT - 2400MM X 2400MM X 100MM - 150 OF

500 T WLL TUB JACKING BRACKET (SUIT BE AND MARION) - 3 OF

EQUIPMENT & TOOLING

500 T WLL TUB JACKING BRACKET (SUIT P&H 9020) - 3 OF

1000 T WLL STEEL ENCASED CONCRETE BLOCKS (1200MM L X 1200MM W X 400MM H) - 42 OF

BE1370W DRUM JACKING FRAMES / CRADLES - 4 OF

150 T WLL SUPPORT STOOLS (430MM DIA. X 500MM H) - 4 OF

150 T WLL SUPPORT STOOLS (430MM DIA. X 350MM H) - 8 OF

150 T WLL SUPPORT STOOLS (330MM DIA. X 460MM H) - 8 OF

150 T WLL SUPPORT STOOL PACKERS (ASSORTED QTY. - 50MM & 150MM) - 24 OF

400 T WLL SUPPORT STOOLS (410MM DIA. X 550MM H) - 4 OF

500 T WLL SUPPORT STOOLS (330MM DIA. X 750MM H) - 4 OF

400 T WLL JACKING / PACKING STANDS (1500MM L X 310MM W X 750MM H) - 6 OF

400 T WLL PIN / SHAFT REMOVAL JACKING HAUNCH (P&H 9020 DRUMS)

400 T WLL PIN / SHAFT REMOVAL JACKING HAUNCH (MARION 8750 PROPEL SHAFT)

200 T WLL CLIMBING JACK FRAME - 4 X COLUMNS & 2 X SUPPORT BEAMS/ CRADLES

25 T WLL SUPPORT TROLLEYS - 3 OF

50 T WLL JACKING SUPPORT STAND (TUB WEAR PLATES) - 4 OF

15 T WLL DRAGLINE INTERMEDIATE GEAR SUPPORT STANDS - 2 OF

0.3 T WLL DRAGLINE INPUT GEAR SUPPORT STANDS - 4 OF

5 T WLL - 7.5M LONG 460 UB LIFTING BEAM (DRAGLINE SLIP RINGS & CENTRE BEARING CARTRIDGE)

2 T WLL TURNTABLE / TUB WEAR PLATE INSTALLATION STAND

ASSORTED HARDWOOD TIMBER DUNNAGE (600MM LONG) - 250 OF (1 X LOT)

ASSORTED HARDWOOD TIMBER DUNNAGE (1200MM LONG) - 250 OF (1 X LOT)

ASSORTED HARDWOOD TIMBER DUNNAGE (2400MM LONG) - 250 OF (1 X LOT)

ELECTRICAL DISTRIBUTION EQUIPMENT

SMALL DISTRIBUTION BOARD (LG 17) - 8 OF

LARGE DISTRIBUTION BOARD (LG 83) - 4 OF

3 PHASE INTERCONNECTING LEADS (63 A) - 20 OF

3 PHASE INTERCONNECTING LEADS (32 A) - 20 OF

WELDING / HEATING / CUTTING EQUIPMENT

240 V CADDY WELDER

240 V MIG WELDER

240 V TIG WELDER

LN25 WIRE FEEDER

LINCOLN 650A FLEXTEC ELECTRIC WELDING MACHINE

LINCOLN 500A FLEXTEC ELECTRIC WELDING MACHINE

SPEEDGLASS AIR FED WELDING HELMET SYSTEM

NEDERMAN EXTRACTION FAN & DUCTING

AXIAL PUSH / PULL FAN & DUCTING

OXY / LPG GAS CARRIERS (NO GAS)

PLASMA CUTTER (INC CONSUMABLES)

MILLER BIG BLUE 800X DUO AIR PAK DIESEL WELDER

MOBILE WELDING POD C/W 1 X 60 KVA GENSET; 1 X AIRMAN 90 CFM COMPRESSOR; 2 X LINCOLN 650A

INVERTEC ELECTRIC WELDERS; 2 X LN 25 WIRE FEEDERS

FULLY EQUIPPED WELDING TRAILER C/W MILLER BIG BLUE 800X DUO AIR PAK DIESEL WELDER;

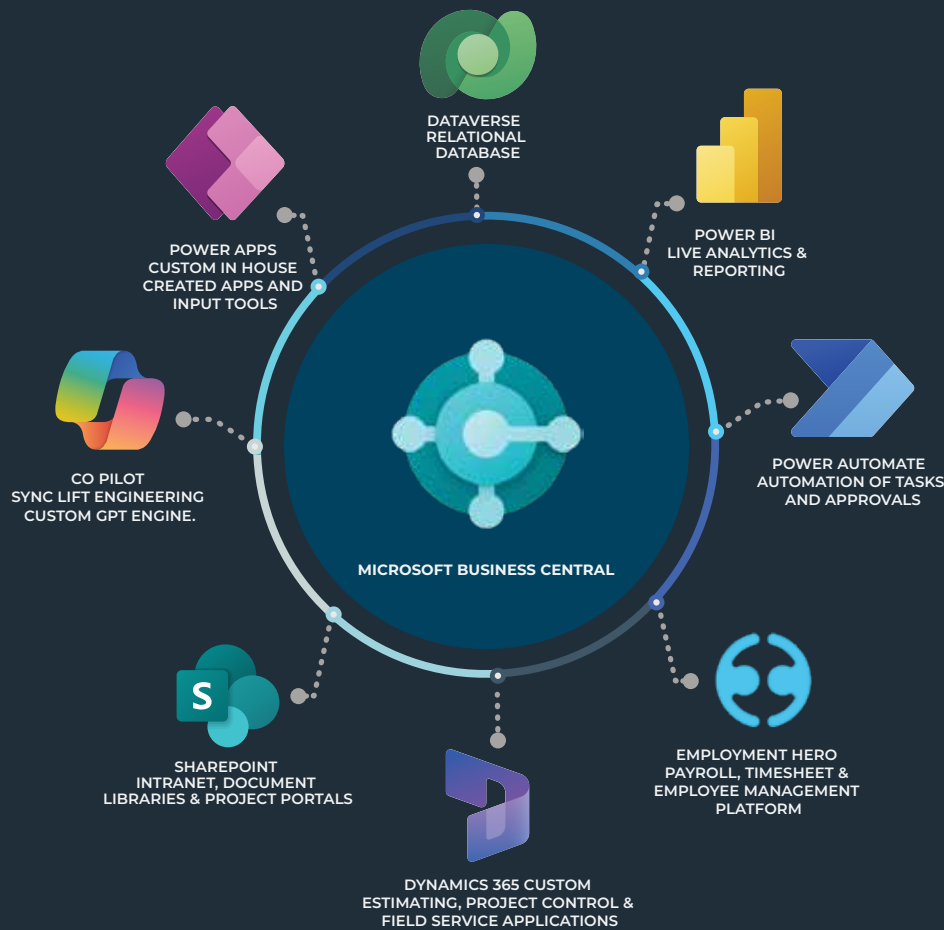
KUBOTA 9 KVA GENSET - 240V POWER & TOOLING FOR 2 X BOILERMAKERS

HEAT BEAD MACHINE C/W CONSUMABLES

LARGE STORAGE BOX - 1" & 1/2" AIR HOSES; ARGON HOSING; OXY / LPG HOSING / WELDING LEADS



MANAGEMENT — OF PERFORMANCE



At **Sync Lift Engineering**, we use **Microsoft Business Central** integrated with the **Microsoft Power Platform** to manage our operations, reporting, and service delivery. This system provides a centralised and efficient approach that supports every stage of our projects.

Business Central brings together key functions such as **finance, procurement, project costing, inventory, and resource planning** into one connected system. This reduces duplication, improves accuracy, and ensures our team operates from real time data, allowing for faster and more informed decision making.

The **Power Platform**, including **Power BI, Power Apps, and Power Automate**, allows us to enhance and customise these capabilities. **Power BI** provides clear and **interactive dashboards** that offer visibility over **project performance**. **Power Apps** enables us to build business tools tailored to specific contract requirements. **Power Automate** streamlines repetitive tasks and improves the flow of information.

For our clients, this means increased **transparency** and **confidence**. We can provide client facing portals and live **reporting dashboards** that are fully customised to contract needs. These tools offer continuous insight into **progress, quality, and compliance**.

By investing in proven **digital platforms**, Sync Lift Engineering ensures every project is delivered with **precision, clarity, and a shared understanding** from start to finish.

OUR PEOPLE

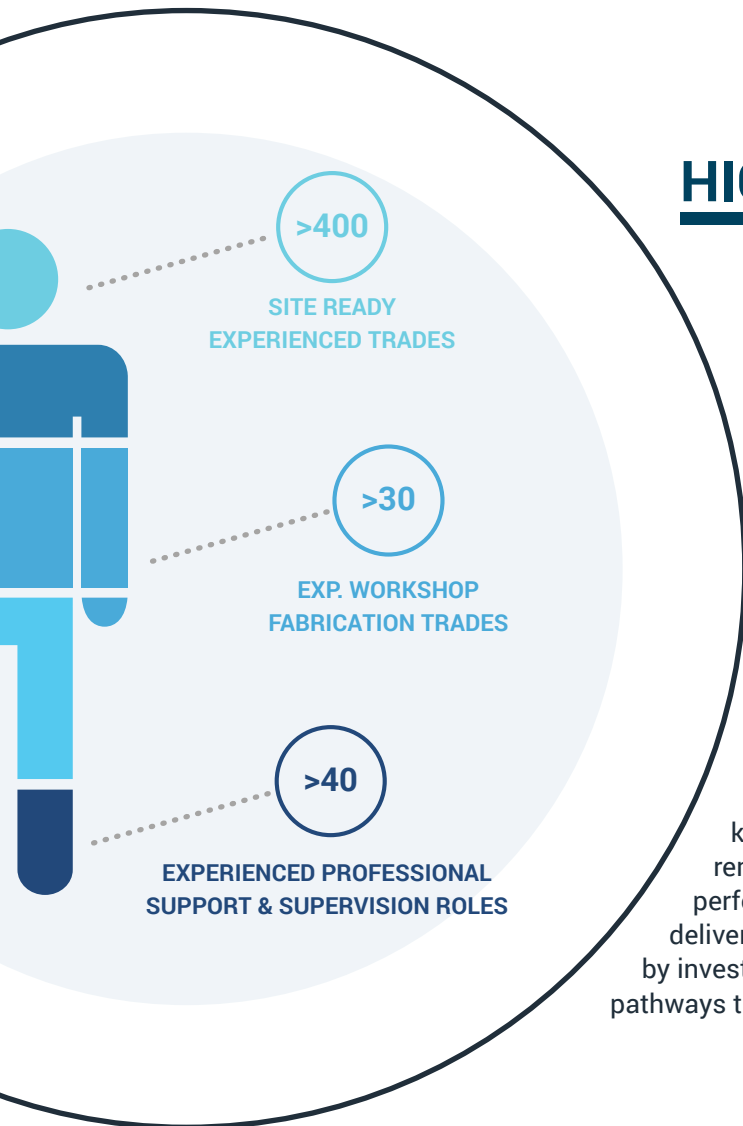
OUR SUCCESS



Our success is built on our people.

Sync Lift Engineering attributes its achievements not only to the leadership of experienced Directors and a capable management team, but importantly to the dedication, skill, and professionalism of our talented tradespeople and support personnel.

Our people embody our values and form the foundation of our reputation for safety, quality, and innovation. Their expertise and commitment ensure that every project – from major shutdowns to complex overhauls – is delivered with precision, pride, and purpose.



HIGHLY SKILLED WORKFORCE

Sync Lift Engineering partners with industry to deliver mechanical overhauls, shutdowns, and fabrication solutions across the resources and heavy industry sectors. At the core of our operations is our Project and Shutdowns Team, delivering major maintenance campaigns and construction projects across Queensland and New South Wales. Supported by our Gladstone workshop, we provide structural steel, piping, mechanical overhauls, and specialised welding, with our Site Services division supplying the expertise and skilled labour to execute safe, efficient, and high-quality outcomes.

With more than 400 skilled people, we combine technical knowledge with practical expertise. The leadership team remains active in both project and management roles, driving performance and accountability while ensuring projects are delivered to scope, schedule, and budget. We create long term value by investing in our people and communities, providing sustainable pathways through apprentice, trainee, and career development programs.



COMMUNITY — & SPONSORSHIP

At **Sync Lift Engineering**, we are proud to support the **regional communities** where we live and work. From local events and industry expos to education and mental wellbeing initiatives, our commitment goes beyond business.

In Gladstone, we participate in the GEA Expo and support a range of **not-for-profit initiatives**. We also contribute to schools, sporting clubs, and community programs through donations, equipment, and hands on support.

Across Central Queensland, we actively support essential services such as the Cancer Council's Rockhampton accommodation units, ensuring vital health and emergency services remain accessible to regional families.


We are also proud supporters of The Outback Mind Foundation, raising awareness of **men's mental health** in regional areas by sponsoring and hosting events and educational workshops.


We are investing in the **future workforce** by partnering with schools and VET programs to offer **student work experience** and teacher engagement. These opportunities provide valuable training and firsthand exposure to life in heavy industry.


Community is at the heart of Sync Lift. Our people are encouraged to volunteer, fundraise, and get involved because we believe an engaged workforce helps build stronger communities.



Our commitment to community means we support projects in areas such as:


 Education and student work experience

 Mental wellbeing initiatives

 Events that make a positive impact

 Community programs


 Local events and industry expos

 Support for essential services

CONTACT US NOW

 (07) 48 377 030

 16-20 SOUTH TREES DRIVE
GLADSTONE QLD 4680

 www.synclift.com.au

PARTNERS

— DELIVERING TOGETHER





CONTACT US NOW



(07) 48 377 030



16-20 SOUTH TREES DRIVE
GLADSTONE QLD 4680



www.synclift.com.au