



SYNC LIFT ENGINEERING

**REPLACE LIMITATIONS
WITH INNOVATION**

DIVERSE ENGINEERED SOLUTIONS FROM WORKSHOP TO SITE

PROJECTS & SHUTDOWNS CAPABILITY STATEMENT





**REPLACE LIMITATIONS
WITH INNOVATION**

Sync Lift Engineering is a trusted partner in Projects & Shutdowns, Fabrication & Overhaul, Field Services, Specialised Hydraulic Jacking, Breakdown Support & Sustaining Capital Works for the Mining, Ports, Power, Resources & Infrastructure Sectors.

With extensive experience in major shutdowns and project delivery, we are recognised for safe, efficient and high-quality execution in complex operating environments.

Our expertise spans both mobile and fixed plant, including draglines, rope shovels, hydraulic excavators, overburden drills, cement mills, coal handling preparation plants, and stockyard terminals. Through disciplined systems, practical knowledge, and a proactive approach, we achieve consistent results that deliver critical outcomes.

Directors Brian Lynch, Marc Richards, and Brad Klease lead a team with decades of hands-on industry experience. Working closely with clients, we minimise operational disruption while maximising asset availability, reliability, and performance.

Our vision is to deliver sustainable, industry-leading services by empowering people to replace limitations with innovation.

Our mission is to build, maintain, and improve assets through safe, efficient, and cost-effective delivery.

Our values – Health & Safety, Courage & Integrity, Loyalty & Respect, Teamwork & Achievement – shape our culture and guide our work every day.

Renowned for our technical capability, responsive project teams, and consistent results, our Projects & Shutdowns Division partners with clients throughout Queensland and New South Wales to deliver practical, scalable solutions that perform.

Brad Klease

Brian Lynch

Marc Richards



OUR VISION

—MISSION & VALUES

Our **Vision** is to provide sustainable, industry leading engineering and maintenance services & solutions. We will achieve this through our people who 'replace limitations with innovation' creating value for our stakeholders worldwide.

Our **Mission** is to build, maintain and improve our client's assets through the reliable delivery of safe, efficient, and cost-effective outcomes.

HEALTH & SAFETY

We are committed to providing safe systems of work to deliver a risk-averse workplace with regard to the safety, health and wellbeing of our employees, clients, community, and the environments in which we operate.

COURAGE & INTEGRITY

We have the courage to challenge the status quo and are open, honest and transparent taking responsibility for our work and our actions.

LOYALTY & RESPECT

We develop long term relationships by earning respect, building trust, and gaining the support of our clients, partners and each other. We are dependable, take ownership and accountability for our own and our client's assets.

TEAMWORK

We work collaboratively as a team in a cooperative, inclusive and supportive environment to achieve success for our clients and employees.

ACHIEVEMENT

We are committed to achieving success for our clients, partners and each other. We continue to listen and learn to ensure continuous improvement in our operations.

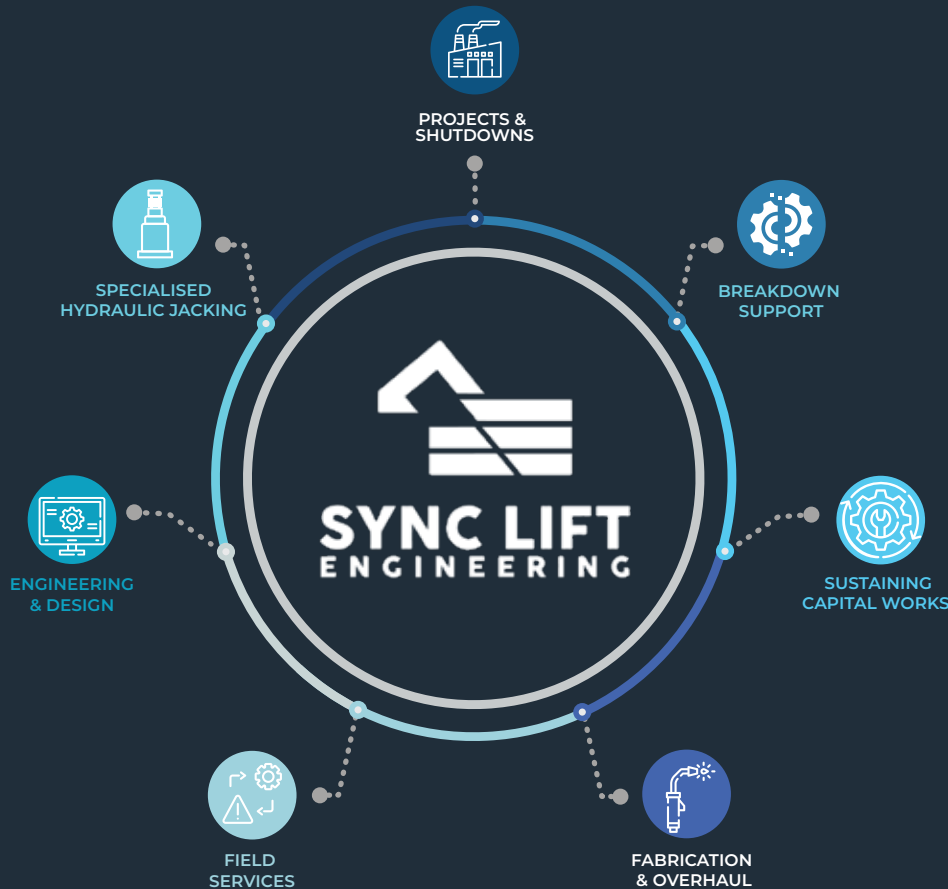




SYNC LIFT
ENGINEERING

PROJECTS & SHUTDOWNS

FROM PIT TO PORT



Since **2017**, Sync Lift Engineering has delivered safe, efficient, and high-quality **Projects & Shutdowns, Fabrication & Overhaul, Field Services, Specialised Hydraulic Jacking, Breakdown Support & Sustaining Capital Works** to the **Mining, Ports, Power, Resources & Infrastructure Sectors**.

Recognised for our ability to perform in complex, high-risk environments, we provide complete end-to-end support for major shutdowns, capital projects, and critical maintenance delivery.

Our expertise covers both mobile and fixed plant, including draglines, rope shovels and other heavy mining equipment through to coal handling preparation plants, refineries, smelters and stockyard machines and infrastructure. Through disciplined systems and practical field knowledge, we deliver outcomes that reduce downtime and maximise asset performance.

With a highly skilled and diverse workforce, our **Projects & Shutdowns Division** specialises in executing works safely, on time, and on budget. We support clients across Queensland and New South Wales – from the Bowen Basin to the Hunter Valley, and from Northern NSW through to coal and port terminals along the East Coast. Our **Gladstone workshop** further enhances our capability to meet the demands of any project.

From **Pit to Port**, Sync Lift Engineering continues to **Replace Limitations with Innovation**, keeping industry moving.

Our **vision** remains clear: to build, maintain, and improve the asset life cycle through safe, efficient, and sustainable delivery, while empowering our people to drive superior outcomes.



PROJECT

CASE STUDIES

PROJECT

CASE STUDIES

Dragline 27 AC Upgrade (Marion 8050)

HSE – No LTI's, reportable injuries or incidents.

SCOPE OF WORK

- ✓ Mechanical / Structural Contractor for AC Upgrade
- ✓ Propel Machinery Overhaul
- ✓ Hoist Drum Replacement
- ✓ Swing Machinery Overhaul
- ✓ Drag Gearcase 1 & 2 Overhauls
- ✓ Tub / Base Remediation (over tub pit)
- ✓ Upper Drag Sheaves & Fairleads Overhaul
- ✓ Hoist Deflection Sheaves Overhaul
- ✓ Rev Frame Crack Repairs



Reclaimer 1 Slew Bearing Replacement

HSE – No LTI's, reportable injuries or incidents

SCOPE OF WORK

- ✓ Slew Bearing Replacement with new 6m diameter Rothe Erde Bearing
- ✓ Blast & Paint Remediation Works
- ✓ Electrical Disconnects & Reinstatement
- ✓ Blast & Paint Remediation Works

Surge Bin 1

HSE – No LTI's, reportable injuries or incidents.

SCOPE OF WORK

- ✓ Gain access to surge bin from +16M RL Ring Beam
- ✓ Scaffold from discharge of bin to underside of ceiling internally
- ✓ Cut in and install PA door, inspection windows and establish access platforms for future maintenance and inspections
- ✓ Internal blasting
- ✓ Installation of 3CR12 liner plates, Carbon steel liner plates and applied spray on polyurethane wear lining
- ✓ Remediation and replacement of corroded members
- ✓ Surface preparations and protective coatings to offshore asset specifications



PROJECT

CASE STUDIES

DS1 & 2 Vault Girder Beam Replacements + DS2 Vault Girder Fabrication

HSE – No LTI's, reportable injuries or incidents.

SCOPE OF WORK

- ✓ Gain access to rail corridor for removal of existing vault girder beams
- ✓ Scaff from bottom of vault as well as drop scaffolds in every hopper to access underside of girders
- ✓ Set up and install inhouse custom designed mobile gantry
- ✓ Demolish hold downs and remove existing girders
- ✓ Remediate & replace concrete pedestals
- ✓ Setting out and aligning hold down configuration
- ✓ Core drilling and installing hold-down hardware
- ✓ Install and align new girders to AURIZON open track tolerances
- ✓ Grout in-situ and retain girders
- ✓ Return Dump station for receipt of coal



Power Station & Dip Seal Upgrades

HSE – No LTI's, reportable injuries or incidents.

SCOPE OF WORK

- ✓ In house fabrication of 3CR12 Dipseal and carbon steel draglink conveyor – all fabricated to tight tolerances over 24+ meter lengths
- ✓ On site removal and disposal of Draglink conveyor and Dipseal using bespoke inhouse designed jacking and skating solutions to remove existing and install the new
- ✓ Installation on site of both units 1 and 2
- ✓ Removal and installation methodology designed by Sync Lift Engineering reduced the replacement duration by 5 days per unit



PROJECT

CASE STUDIES

SRM Loop 6 & Loop 1 Upgrades

HSE – No LTI's, reportable injuries or incidents.

SCOPE OF WORK

- ✓ Replacement of screens, pipework, under pans, cyclones, magnetic separators, chutes, sumps, and structural members
- ✓ Remediation of corroded structures
- ✓ Blasting and painting of structures
- ✓ Management of simultaneous operations from above and below
- ✓ Half loop upgrade of loop 6 – Completed whilst plant remained in operation
- ✓ Full loop upgrade of loop 1 – Completed during full plant shutdown
- ✓ Repairs to Boom & Mast



Dragline 01 Shutdown (BE1370W)

HSE – No LTI's, reportable injuries or incidents.

SCOPE OF WORK

- ✓ Boom Lower / Removal / Overhaul and Replacement
- ✓ Fairleads Overhaul
- ✓ Swing Machinery Overhaul
- ✓ Propel Machinery Overhaul
- ✓ Crack Repairs through Rev Frame
- ✓ Crack Repairs to Boom & Mast
- ✓ Boom Pendant Ropes & IBS Ropes Replacement
- ✓ DC Motor Overhauls
- ✓ Boom Point Sheaves Overhaul
- ✓ Propel Shoe Removal & Replacement
- ✓ Propel Lower Cam Frame Replacement





PROJECT

CASE STUDIES

Dragline 28 Shutdown & Tub Replacement (Marion 8050)

HSE – No LTI's, reportable injuries or incidents.

SCOPE OF WORK

- ✓ Removal & Replacement of Tub for New (Hofmann)
- ✓ Upper Rails Replacement (Hofmann)
- ✓ Hoist Drum Replacement
- ✓ Swing Machinery Overhaul
- ✓ Drag Gearcase 1 & 2 Overhauls
- ✓ Centre Bearing & Bush Replacement
- ✓ Upper Drag Sheaves & Fairleads Overhaul
- ✓ Hoist Deflection Sheaves Overhaul
- ✓ Rev Frame, House and Boom Crack Repairs



BUCYRUS/CAT 7495 ERS SHE39

HSE – No LTI's, reportable injuries or incidents

SCOPE OF WORK

- ✓ Set up and installation of jacking equipment
- ✓ Complete de-deck and carbody motivation
- ✓ Realignment and assemble machines ready for handover

Dragline 001 Shutdown (BE1370W)

HSE – No LTI's, reportable injuries or incidents.

SCOPE OF WORK

- ✓ Tub Wear Plates (over 2 x pits for plates 180 degrees opposed)
- ✓ Fairleads Overhaul
- ✓ Swing Machinery Overhaul
- ✓ Drag Gearcase 1 & 2 Overhauls
- ✓ Crack Repairs through Rev Frame
- ✓ Crack Repairs to Boom & Mast
- ✓ DC Motor Overhauls



PROJECT

CASE STUDIES

Dragline 102 Shutdown (Marion 8750)

HSE – No LTI's, reportable injuries or incidents.

SCOPE OF WORK

- ✓ LHS & RHS Propel Machinery Externals Overhaul
- ✓ Walking Arm & Eccentric Cam Replacements
- ✓ Swing Gearcases & DC Motors Replacement
- ✓ Hoist & Drag Gearcase Overhauls
- ✓ MG Set Overhauls
- ✓ Rev Frame Crack Repairs
- ✓ Boom Crack Repairs
- ✓ Drag Chute Replacement



CHPP Shutdown

HSE – No LTI's, reportable injuries or incidents

SCOPE OF WORK

- ✓ Screen Replacements
- ✓ TLO Bin Liner Package
- ✓ Pumps & Piping Replacements
- ✓ TLO E House Removal & Replacement

Dragline 01 Shutdown (BE1370W)

HSE – No LTI's, reportable injuries or incidents.

SCOPE OF WORK

- ✓ Boom Lower / Removal / Overhaul – Chords & Lacings / Replacement / Raise
- ✓ Boom Feet Upgrade on RF
- ✓ A Frame Rear Legs Replacement & Lugs Replacement
- ✓ Drag Drum Replacement & Gearcase Overhauls
- ✓ Hoist Drum Replacement & Gearcase Overhauls
- ✓ Swing Gearcase Overhauls
- ✓ Fairleads Overhaul
- ✓ DC Motor Overhauls
- ✓ MG Set Overhauls
- ✓ Rev Frame Crack Repairs



PROJECT

CASE STUDIES

Dragline 38 Shutdown (Marion 8200)

HSE – No LTI's, reportable injuries or incidents.

SCOPE OF WORK

- ✓ Boom Lower/Raise
- ✓ Boom Lower 3rd Replacement
- ✓ Boom Walkway Replacement
- ✓ Boom Point Sheave Assembly Overhaul
- ✓ Fairleads Overhaul
- ✓ Hoist Deflection Sheaves Overhaul
- ✓ Main Suspension Ropes Replacement
- ✓ IBS Ropes Replacement



SR4 & SR5 Pivot Pin Upgrades

HSE – No LTI's, reportable injuries or incidents

SCOPE OF WORK

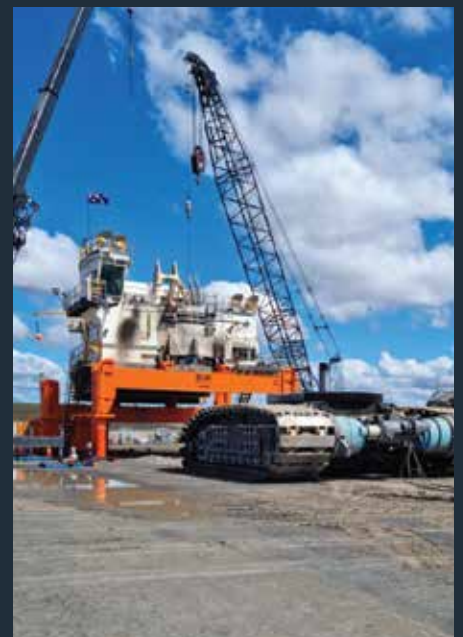
- ✓ Synchronous Jacking & Support of Bucketwheel & Counterweight Booms for Pivot Pin Replacements
- ✓ Lineboring of Existing Bores for Upgraded Bearings & Pins
- ✓ Replacement of Long Travel Drive Bogies

SHV01 Shutdown - PH4100A & SHV02 4100XPC-AC

HSE – No LTI's, reportable injuries or incidents.

SCOPE OF WORK

- ✓ Walk out of handles over jacking equipment
- ✓ Install front haunches and jacking equipment
- ✓ Electrical and mechanical disconnects from upper and lower structures
- ✓ Motivate car body using Sync Lift's DHPU & hydraulic drive arrangement
- ✓ Lower, remove and transfer boom
- ✓ Internal crack repairs to boom, car body and revolving frame
- ✓ Hoist swing and propel overhauls
- ✓ Replace swing rack rails and rollers
- ✓ Full crowd overhaul
- ✓ Reassemble ready for handover to production



PROJECT

CASE STUDIES

DG001 (P&H 9020)

HSE – No LTI's, reportable injuries or incidents.

SCOPE OF WORK

- ✓ Boom Lower & Raise
- ✓ Boom Overhaul
- ✓ Boom Pendant Ropes & IBS Ropes Replacement
- ✓ Propel Machinery Overhaul
- ✓ Hoist Machinery Overhaul
- ✓ Swing Machinery Overhaul
- ✓ Drag Machinery Overhaul
- ✓ MG Set Overhauls
- ✓ All DC Motors Overhauls
- ✓ Drive & Control System Upgrade
- ✓ Tub / Base Crack Repairs
- ✓ Rev Frame Crack Repairs



OUR PEOPLE

OUR SUCCESS



Our success is built on our people.

Sync Lift Engineering attributes its achievements not only to the leadership of experienced Directors and a capable management team, but importantly to the dedication, skill, and professionalism of our talented tradespeople and support personnel.

Our people embody our values and form the foundation of our reputation for safety, quality, and innovation. Their expertise and commitment ensure that every project – from major shutdowns to complex overhauls – is delivered with precision, pride, and purpose.



HIGHLY SKILLED WORKFORCE

Sync Lift Engineering partners with industry to deliver mechanical overhauls, shutdowns, and fabrication solutions across the resources and heavy industry sectors. At the core of our operations is our Project and Shutdowns Team, delivering major maintenance campaigns and construction projects across Queensland and New South Wales. Supported by our Gladstone workshop, we provide structural steel, piping, mechanical overhauls, and specialised welding, with our Site Services division supplying the expertise and skilled labour to execute safe, efficient, and high-quality outcomes.

With more than 400 skilled people, we combine technical knowledge with practical expertise. The leadership team remains active in both project and management roles, driving performance and accountability while ensuring projects are delivered to scope, schedule, and budget. We create long term value by investing in our people and communities, providing sustainable pathways through apprentice, trainee, and career development programs.



NETWORKING

— FOUNDATION FOR SHUTDOWNS

Sync Lift Engineering has developed a **portable, modular network architecture** purpose-built for shutdown and project environments. This innovative system ensures complete site connectivity across project sites, shutdown pads, workshops, stores, and offices – solving long-standing communication challenges in remote and high-risk operational areas.

Leveraging **mesh networking** and **point-to-point wireless bridging**, our system provides seamless roaming, reliable bandwidth, and real-time visibility of connected devices. Remote diagnostics allow issues to be identified and resolved promptly, reducing disruption, improving efficiency, and enabling **digital-first execution**.

A secure **guest network** – governed through VLAN separation and bandwidth control – allows client personnel and contractors to connect safely without compromising operational networks.

Key Capabilities:

- ✓ Live fault reporting directly from plant and equipment
- ✓ iPad connectivity for Hindsight and digital workpacks
- ✓ Paperless workflows with improved traceability
- ✓ Rapid emergency communication and response
- ✓ Remote access to Stores dashboards and systems

System Advantages:

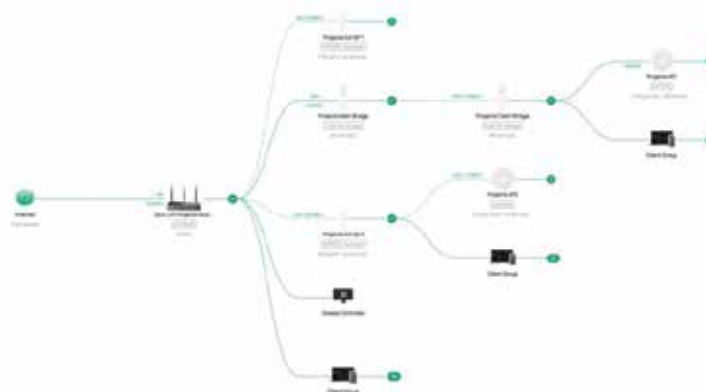
- ✓ **Modular:** Scalable for small crews or large shutdowns
- ✓ **Cost-Effective:** Licence-free platform with minimal overheads
- ✓ **Containerised:** Portable, repeatable, and reusable
- ✓ **Expandable:** Easily scaled with additional access points

Recent deployment at **Dawson Mine** achieved a significant improvement in pad communications, earning recognition from both client and internal leadership. The initiative has since been formalised as a **Continuous Improvement project**.

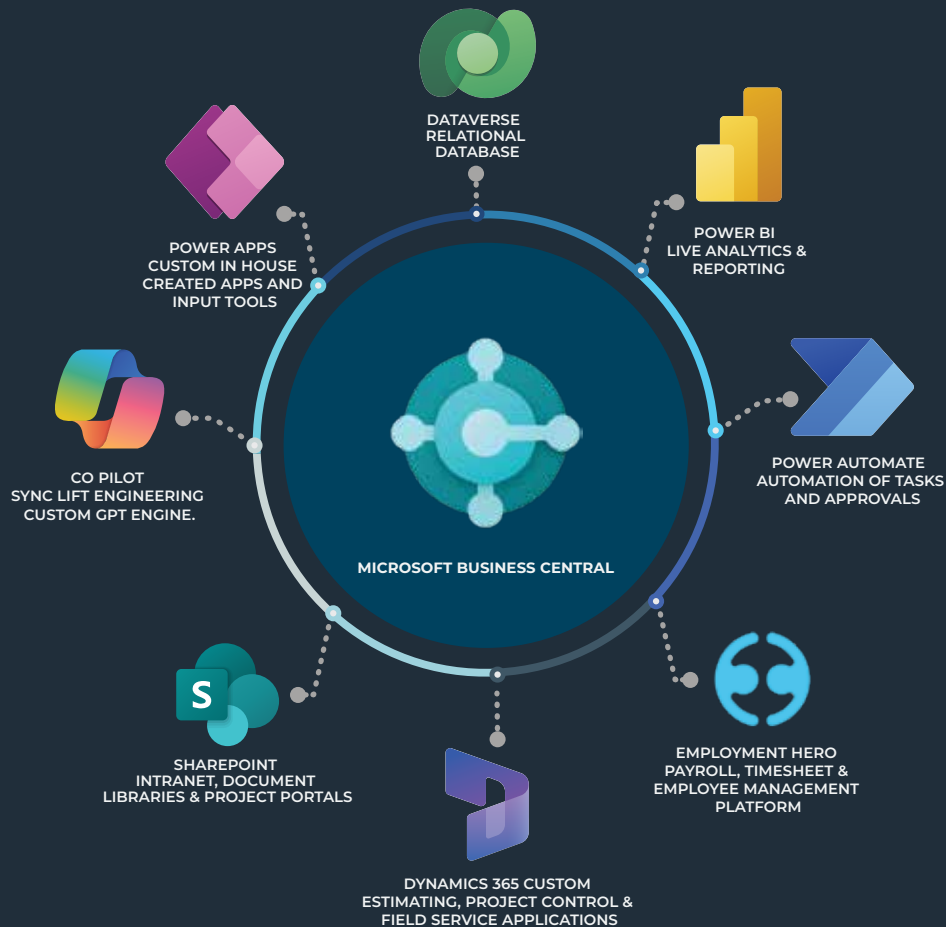
By treating **connectivity as critical infrastructure**, Sync Lift Engineering unlocks further innovation:

- ✓ Digital stores and tool tracking systems
- ✓ Safety and induction kiosks
- ✓ Remote diagnostics dashboards
- ✓ Workforce mobility applications
- ✓ Real-time reporting and analytics

This initiative reinforces our commitment to our mantra of **'Replace Limitations with Innovation'** – delivering a **modular, portable wireless network** that provides full-site connectivity, real-time data visibility, and safer, more efficient shutdown and project execution at a fraction of traditional infrastructure cost.



MANAGEMENT — OF PERFORMANCE



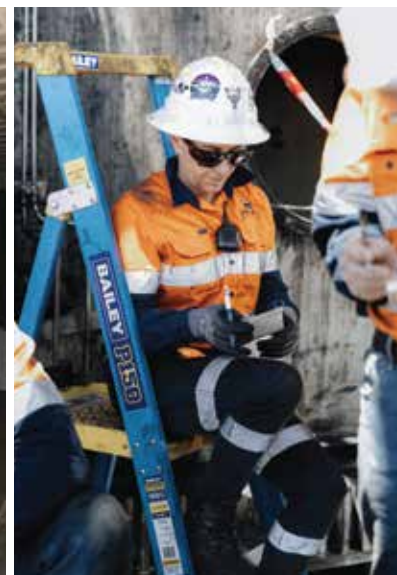
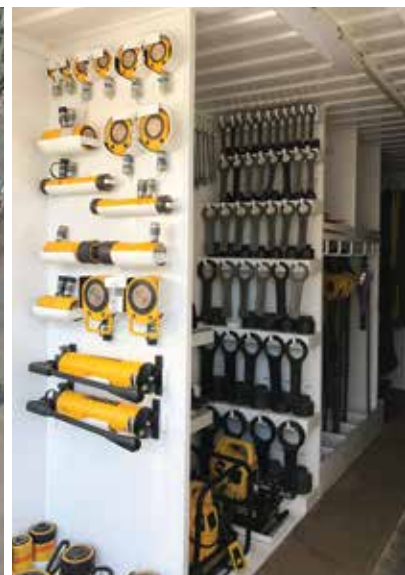
At **Sync Lift Engineering**, we use **Microsoft Business Central integrated** with the **Microsoft Power Platform** to manage our operations, reporting, and service delivery. This system provides a centralised and efficient approach that supports every stage of our projects.

Business Central brings together key functions such as **finance, procurement, project costing, inventory, and resource planning** into one connected system. This reduces duplication, improves accuracy, and ensures our team operates from real time data, allowing for faster and more informed decision making.

The **Power Platform**, including **Power BI, Power Apps, and Power Automate**, allows us to enhance and customise these capabilities. **Power BI** provides clear and **interactive dashboards** that offer visibility over **project performance**. **Power Apps** enables us to build business tools tailored to specific contract requirements. **Power Automate** streamlines repetitive tasks and improves the flow of information.

For our clients, this means increased **transparency** and **confidence**. We can provide client facing portals and live **reporting dashboards** that are fully customised to contract needs. These tools offer continuous insight into **progress, quality, and compliance**.

By investing in proven **digital platforms**, Sync Lift Engineering ensures every project is delivered with **precision, clarity, and a shared understanding** from start to finish.



OUR WORKSHOP

GLADSTONE

Our strategically located Gladstone facility spans 18,000 m² of land, providing convenient access to major industrial processing plants and ports in this area.



KEY FEATURES:

- 1,500 m² heavy engineering workshop
- 3,500 m² modular assembly area
- 2,000 m² site readiness facility
- 5,000 m² laydown area
- Dedicated hydrotesting area
- Office spaces

CRANAGE CAPACITY:

- 60-tonne overhead crane
- 10-tonne overhead crane

THE FACILITY IS DESIGNED TO SUPPORT:

- Heavy fabrication and overhaul (mining equipment, dragline buckets, shovel dippers, excavator buckets, dozer blades, dump truck trays, rotatable spares)
- General fabrication and maintenance works (platework, pipework, modular and portal structures)
- Ancillary works (platforms, handrail, grating)
- Minor machining, milling
- Line boring

EQUIPMENT:

Our equipment is selected to deliver safe, efficient, and large-scale project support:

- 5-tonne rough terrain forklift
- Skid-mounted welding units and mobile welding trailers
- Lineboring containers
- Hydraulic jacks and control systems
- 6-tonne delivery truck
- Fully compliant mine site vehicles:
 - 4x4 and 4x2 trucks
 - 12-seater buses
 - Large fleet of 4x4 one-tonne utilities
- Specialist stands, packing, and support gear
- Over 25 bespoke containers with asset-tracked tooling and equipment for minor and major projects, downtime response, and full-scale shutdowns (150+ personnel)



TOOLING & EQUIPMENT CAPABILITY



STRUCTURAL

Welding & Power
Containers equipped with 12 x Lincon DC600 welders & associated connections can facilitate welding & power requirements for the largest shutdowns.



MECHANICAL

Mechanical tooling containers set out using the 5s principle, ensures all tooling required to execute the most complex shutdowns is at the fingertips of our skilled tradesman.



RIGGING

Rigging containers designed to maximise storage capacity and ease of access. This ensures all of the vital rigging, lifting & height safety equipment required is within arms reach

Sync Lift Engineering has made significant strategic investments to ensure we maintain one of the most reliable, advanced, and fully compliant asset inventories in the industry.

Our tooling fleet includes more than 25 custom engineered containers, each equipped with specialised, asset-tracked tools to support both routine and critical-path maintenance activities. These are configured to service rapid response works through to full-scale shutdowns supporting crews of 150+ personnel. All tooling is organised and maintained under strict 5S methodology, maximising tool time and reducing onsite inefficiencies.

We operate a **fleet of mobile, skid & trailer mounted welding plants**, enabling us to work self-sufficiently in remote and high-risk environments without reliance on client infrastructure.

Our **heavy lifting capabilities** include a wide range of hydraulic jacks and control systems, spanning from 5T through to 1000T, complemented by fully engineered, specialised jacking solutions tailored for dragline, shovel, balance machine and fixed plant asset requirements.

We also maintain an extensive inventory of purpose-built stands, packing systems and support structures, specifically designed for large-scale surface mining equipment, ensuring safe, compliant, and efficient execution.

Behind this capability is our **dedicated team of Asset, Procurement, and Mobilisation specialists**, who guarantee 100% compliance and readiness across all tooling and equipment.

EQUIPMENT & TOOLING

GENERAL TOOLING & EQUIPMENT CONTAINERS

20 FT MECHANICAL # 1 CONTAINER

20 FT MECHANICAL # 2 CONTAINER

20 FT STRUCTURAL # 1 CONTAINER

20 FT STRUCTURAL # 2 CONTAINER

20 FT RIGGING # 1 CONTAINER

20 FT RIGGING # 2 CONTAINER

20 FT ELECTRICAL # 1 CONTAINER

20 FT PPE & CONSUMABLES # 1 CONTAINER

20 FT PPE & CONSUMABLES # 2 CONTAINER

20 FT PPE & CONSUMABLES # 3 CONTAINER (BULK STORAGE)

20 FT PPE & CONSUMABLES # 4 CONTAINER (BULK STORAGE)

20 FT ISOLATION CONTAINER

20 FT POTABLE WATER CONTAINER

10 FT DANGEROUS GOODS CONTAINER

20 FT TOOLS STORAGE CONTAINER

20 FT CLIMAX 5" LINEBORING CONTAINER

20 FT ENERPAC SYNCHRONOUS JACKING SYSTEM # 1 CONTAINER (C/W 7 X 500 T D/A JACKS)

20 FT DURAPAC SYNCHRONOUS JACKING SYSTEM # 2 CONTAINER (C/W 7 X 500 T D/A JACKS)

20 FT WELDING & POWER CONTAINER (C/W 12 X DC 600A ELECTRIC WELDERS)

SPECIALISED EQUIPMENT

BEARING INDUCTION HEATER

TORQUE MULTIPLIER & PUMP - 1.5" DR

TORQUE MULTIPLIER & PUMP - 1" DR

TORQUE MULTIPLIER & PUMP - 2.5" DR

TORQUE MULTIPLIER & PUMP - 3/4" DR

46MM CASSETTE STYLE TORQUE MULTIPLIER & PUMP

RAD TORQUE GUN - 3/4" DR

ALKITRONIC BATTERY POWERED TORQUE GUN - 1" DR

DIAPHRAGM PUMP & 1000 L POD

HUSQVARNA DRILL STAND & DRILL (LONG STROKE) - 2 OF

HOLEMAKER TAP50 MAGNETIC BASE DRILL - 2 OF

HOLEMAKER PRO110 MAGNETIC BASE DRILL - 6 OF

RIGGING / PARTS LIFTING BOXES - 1000KG WLL - 10 OF

6 PORT COMPRESSED AIR MANIFOLDS - 4 OF

80 T WLL LOAD SKATES - 4 OF

10 T WLL LOAD SKATES - 8 OF

HEAVY RIGGING CHEST (CHAINS TO 32MM & BOW SHACKLES TO 120 T WLL)

HYDRANUT KIT

SITE INFRASTRUCTURE

30M X 30M TUB SHELTER

84 M TUB SKATEWAY SYSTEM

POTABLE WATER TANK - 5000 L - 2 OF

POTABLE WATER WASH BASIN C/W FILTRATION SYSTEM - 2 OF

HARDWOOD TIMBER SLEEPER BOG MAT - 2400MM X 2400MM X 100MM - 150 OF

500 T WLL TUB JACKING BRACKET (SUIT BE AND MARION) - 3 OF

EQUIPMENT & TOOLING

500 T WLL TUB JACKING BRACKET (SUIT P&H 9020) - 3 OF

1000 T WLL STEEL ENCASED CONCRETE BLOCKS (1200MM L X 1200MM W X 400MM H) - 42 OF

BE1370W DRUM JACKING FRAMES / CRADLES - 4 OF

150 T WLL SUPPORT STOOLS (430MM DIA. X 500MM H) - 4 OF

150 T WLL SUPPORT STOOLS (430MM DIA. X 350MM H) - 8 OF

150 T WLL SUPPORT STOOLS (330MM DIA. X 460MM H) - 8 OF

150 T WLL SUPPORT STOOL PACKERS (ASSORTED QTY. - 50MM & 150MM) - 24 OF

400 T WLL SUPPORT STOOLS (410MM DIA. X 550MM H) - 4 OF

500 T WLL SUPPORT STOOLS (330MM DIA. X 750MM H) - 4 OF

400 T WLL JACKING / PACKING STANDS (1500MM L X 310MM W X 750MM H) - 6 OF

400 T WLL PIN / SHAFT REMOVAL JACKING HAUNCH (P&H 9020 DRUMS)

400 T WLL PIN / SHAFT REMOVAL JACKING HAUNCH (MARION 8750 PROPEL SHAFT)

200 T WLL CLIMBING JACK FRAME - 4 X COLUMNS & 2 X SUPPORT BEAMS/ CRADLES

25 T WLL SUPPORT TROLLEYS - 3 OF

50 T WLL JACKING SUPPORT STAND (TUB WEAR PLATES) - 4 OF

15 T WLL DRAGLINE INTERMEDIATE GEAR SUPPORT STANDS - 2 OF

0.3 T WLL DRAGLINE INPUT GEAR SUPPORT STANDS - 4 OF

5 T WLL - 7.5M LONG 460 UB LIFTING BEAM (DRAGLINE SLIP RINGS & CENTRE BEARING CARTRIDGE)

2 T WLL TURNTABLE / TUB WEAR PLATE INSTALLATION STAND

ASSORTED HARDWOOD TIMBER DUNNAGE (600MM LONG) - 250 OF (1 X LOT)

ASSORTED HARDWOOD TIMBER DUNNAGE (1200MM LONG) - 250 OF (1 X LOT)

ASSORTED HARDWOOD TIMBER DUNNAGE (2400MM LONG) - 250 OF (1 X LOT)

ELECTRICAL DISTRIBUTION EQUIPMENT

SMALL DISTRIBUTION BOARD (LG 17) - 8 OF

LARGE DISTRIBUTION BOARD (LG 83) - 4 OF

3 PHASE INTERCONNECTING LEADS (63 A) - 20 OF

3 PHASE INTERCONNECTING LEADS (32 A) - 20 OF

WELDING / HEATING / CUTTING EQUIPMENT

240 V CADDY WELDER

240 V MIG WELDER

240 V TIG WELDER

LN25 WIRE FEEDER

LINCOLN 650A FLEXTEC ELECTRIC WELDING MACHINE

LINCOLN 500A FLEXTEC ELECTRIC WELDING MACHINE

SPEEDGLASS AIR FED WELDING HELMET SYSTEM

NEDERMAN EXTRACTION FAN & DUCTING

AXIAL PUSH / PULL FAN & DUCTING

OXY / LPG GAS CARRIERS (NO GAS)

PLASMA CUTTER (INC CONSUMABLES)

MILLER BIG BLUE 800X DUO AIR PAK DIESEL WELDER

MOBILE WELDING POD C/W 1 X 60 KVA GENSET; 1 X AIRMAN 90 CFM COMPRESSOR; 2 X LINCOLN 650A

INVERTEC ELECTRIC WELDERS; 2 X LN 25 WIRE FEEDERS

FULLY EQUIPPED WELDING TRAILER C/W MILLER BIG BLUE 800X DUO AIR PAK DIESEL WELDER;

KUBOTA 9 KVA GENSET - 240V POWER & TOOLING FOR 2 X BOILERMAKERS

HEAT BEAD MACHINE C/W CONSUMABLES

LARGE STORAGE BOX - 1" & 1/2" AIR HOSES; ARGON HOSING; OXY / LPG HOSING / WELDING LEADS

COMMUNITY — & SPONSORSHIP

At **Sync Lift Engineering**, we are proud to support the **regional communities** where we live and work. From local events and industry expos to education and mental wellbeing initiatives, our commitment goes beyond business.

In Gladstone, we participate in the GEA Expo and support a range of **not-for-profit initiatives**. We also contribute to schools, sporting clubs, and community programs through donations, equipment, and hands on support.

Across Central Queensland, we actively support essential services such as the Cancer Council's Rockhampton accommodation units, ensuring vital health and emergency services remain accessible to regional families.

We are also proud supporters of The Outback Mind Foundation, raising awareness of **men's mental health** in regional areas by sponsoring and hosting events and educational workshops.

We are investing in the **future workforce** by partnering with schools and VET programs to offer **student work experience** and teacher engagement. These opportunities provide valuable training and firsthand exposure to life in heavy industry.

Community is at the heart of Sync Lift. Our people are encouraged to volunteer, fundraise, and get involved because we believe an engaged workforce helps build stronger communities.




Our commitment to community means we support projects in areas such as:

 Education and student work experience

 Community programs

 Mental wellbeing initiatives

 Local events and industry expos


 Events that make a positive impact

 Support for essential services

CONTACT US NOW

 (07) 48 377 030

 16-20 SOUTH TREES DRIVE
GLADSTONE QLD 4680

 www.synclift.com.au

PARTNERS

— DELIVERING TOGETHER





CONTACT US NOW



(07) 48 377 030



16-20 SOUTH TREES DRIVE
GLADSTONE QLD 4680



www.synclift.com.au